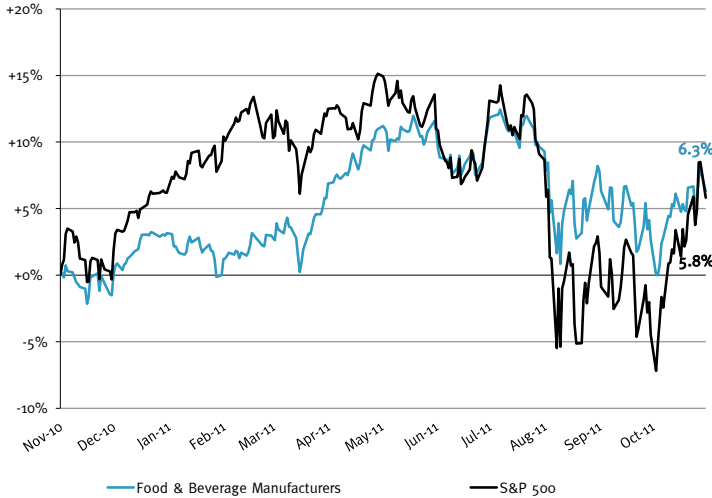


## INGREDIENTS BULLETIN – OCTOBER 2011

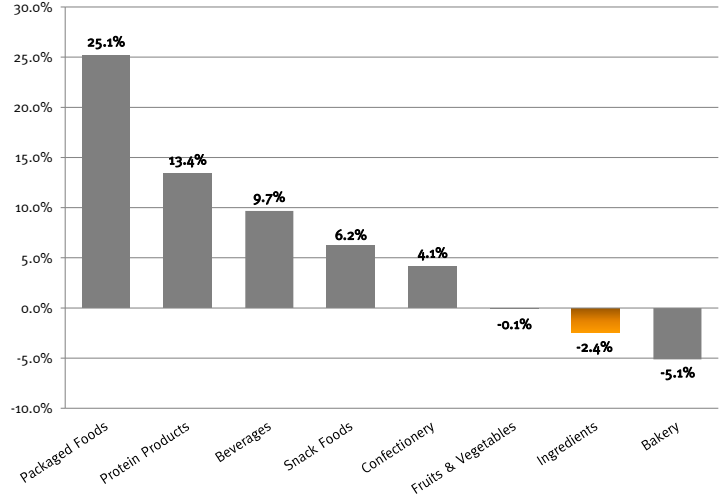
### PUBLIC STOCK PERFORMANCE

Food & Beverage Stock vs. S&P 500 Index



Food Products Index is a customized, market-weighted index of food & beverage stocks.

Food & Beverage Relative Subsector Stock Performance

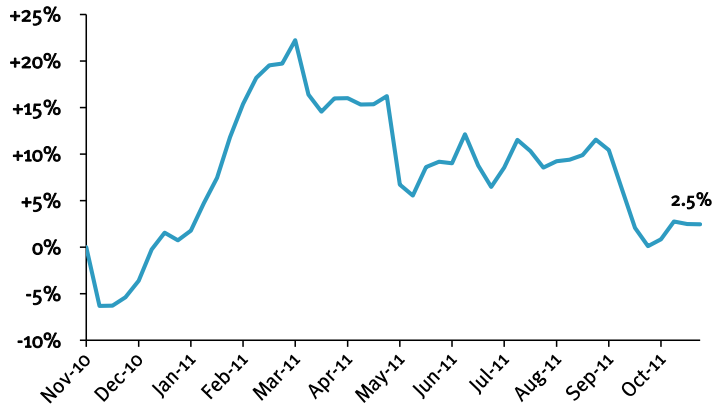


### EXCHANGE LISTED COMMODITY TRENDS

	10/28/2011	52-week			10/28/2011 Close Price % Δ from:		
	Close Price	High	Low	Median	High	Low	Median
Sugar, Cane Raw, World, lb. fob	\$31.05	\$38.57	\$25.47	\$31.05	-19.5%	21.9%	0.0%
Corn, No. 2 yellow. Cent. Ill. bu-BP,U	6.49	7.81	5.02	6.67	-16.9%	29.3%	-2.6%
Cocoa, Ivory Coast, \$ per metric ton	2,866.00	4,257.00	2,866.00	3,411.50	-32.7%	0.0%	-16.0%
Milk, Nonfat Dry, Chicago	158.00	180.00	123.00	161.00	-12.2%	28.5%	-1.9%

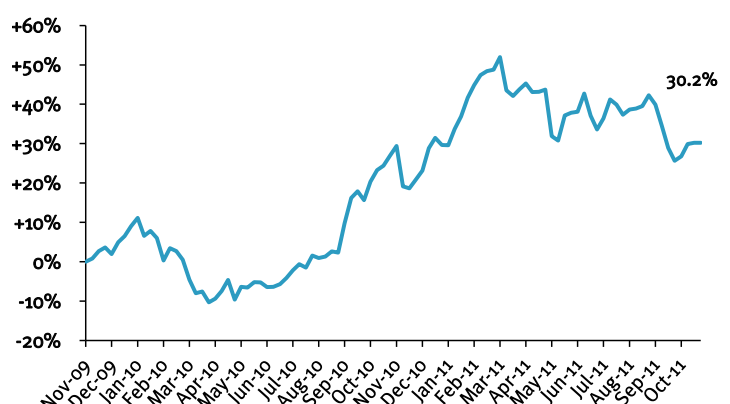
Source: Wall Street Journal

Relative, 1-year Mean Price Change of Aggregated Commodities Above



Source: Wall Street Journal

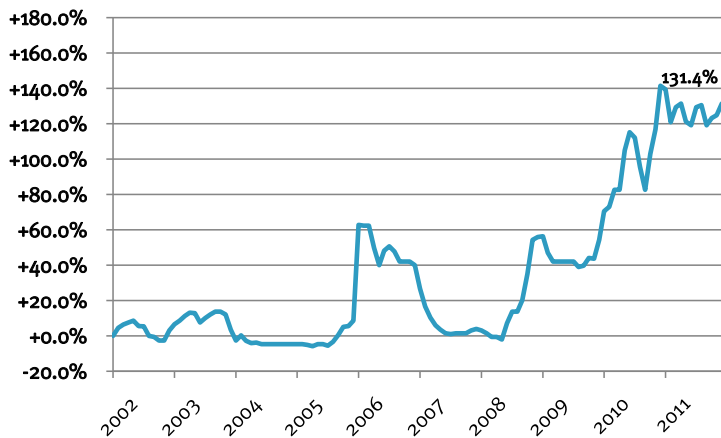
Relative, 2-year Mean Price Change of Aggregated Commodities Above



Source: Wall Street Journal

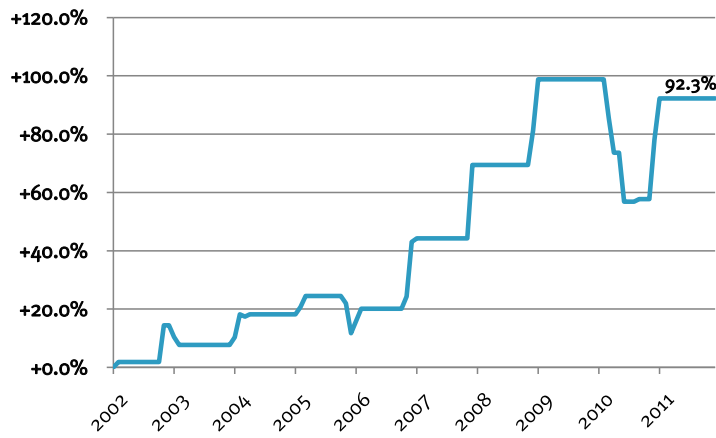
## NON-EXCHANGE LISTED COMMODITY TRENDS

Relative, 10-year Mean Price Change of Refined Beet Sugar



Source: USDA Economic Research Service

Relative, 10-year Mean Price Change of High Fructose Corn Syrup



Source: USDA Economic Research Service

## TRAILING TWELVE MONTH VALUATION MULTIPLES FOR PUBLIC INGREDIENT COMPANIES

Market Data (Given in \$Millions)

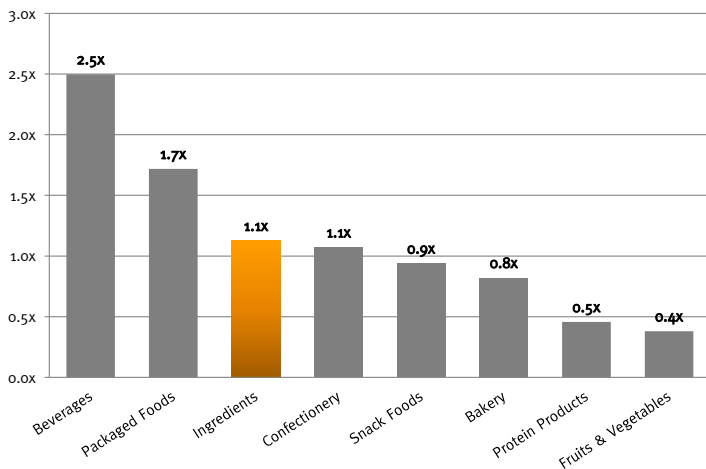
Company (\$ mm)	Ticker	Price 10/31/11	Price Performance LTM	Equity Value	Firm Value	1 Yr Est. Growth Rate	EV / LTM		EBITDA Margin
							Sales	EBITDA	
<b>Ingredients</b>									
Archer Daniels	ADM	\$28.94	-13.1%	\$19,330	\$28,325	4.1%	0.4X	7.9X	4.4%
Bunge	BG	61.77	2.8%	9,107	13,088	19.7%	0.3X	7.1X	3.6%
Corn Products	CPO	48.50	14.0%	3,722	5,343	43.5%	1.0X	7.1X	13.8%
Frutarom Industries Ltd.	FRUT	8.78	-12.4%	530	556	NA	1.2X	7.1X	16.6%
Givaudan AG	SWX:GIVN	917.41	-11.1%	8,343	10,028	NA	2.1X	10.7X	19.5%
International Flavors & Fragrances	IFF	60.56	20.7%	4,898	5,760	7.9%	2.1X	10.7X	19.7%
Kerry Group	KRZ	37.53	2.0%	6,588	8,125	NA	1.1X	9.0X	12.0%
MGP Ingredients	MGPI	6.56	-27.3%	117	123	NA	0.5X	12.3X	4.1%
Sensient Technologies	SXT	36.96	14.4%	1,851	2,139	10.3%	1.5X	9.3X	16.4%
Symrise AG	XTRA:SY1	26.06	-14.2%	3,079	3,890	NA	1.7X	8.4X	20.1%
Average			-2.4%			17.1%	1.2X	8.9X	13.0%
Median			-4.5%			10.3%	1.1X	8.7X	15.1%

Source: Capital IQ and Company Documents  
Except per share data, presented in \$ millions  
EBITDA = Earnings before interest, taxes  
depreciation and amortization

Enterprise Value (EV) = Market value of  
equity + Interest-bearing debt - cash  
NA = Not Available

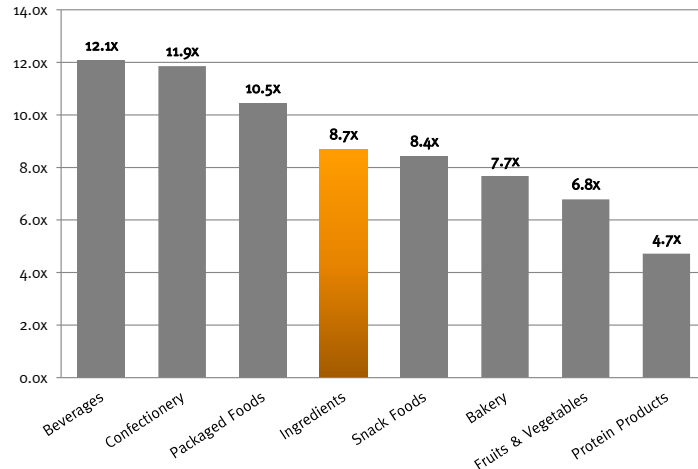
## TRAILING TWELVE MONTH INGREDIENT VALUATION MULTIPLES RELATIVE TO OTHER FOOD SECTORS

Relative LTM EV / Revenue Multiples by Subsector



Source: Capital IQ and Company Documents

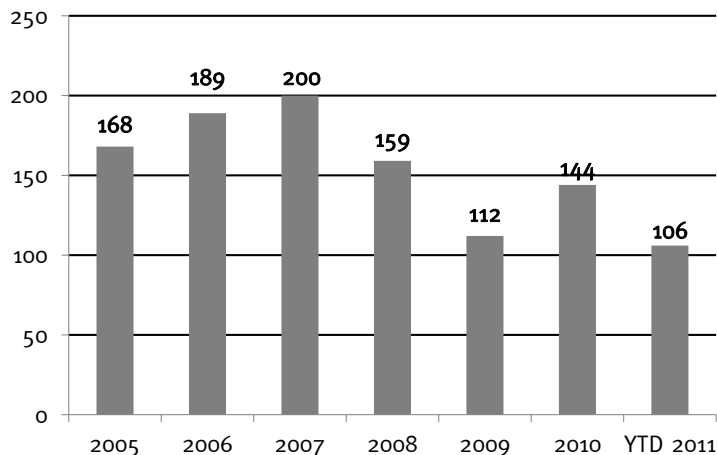
Relative LTM EV / EBITDA Multiples by Subsector



Source: Capital IQ and Company Documents

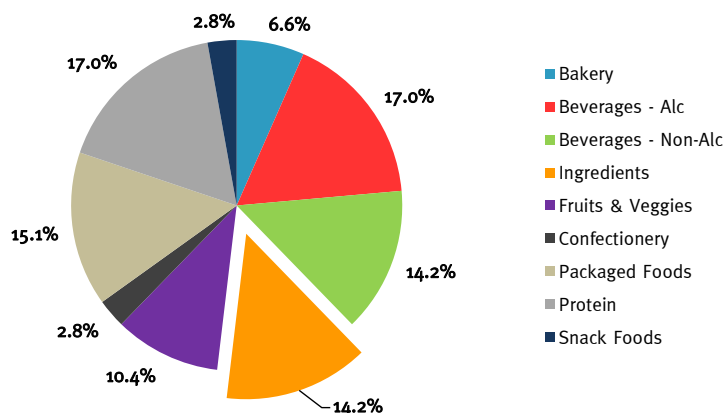
## FOOD AND BEVERAGE M&A HISTORICAL DATA

Historical Transaction Volume  
U.S. Targets



Source: Capital IQ and Proprietary Database (2004 to 2011)

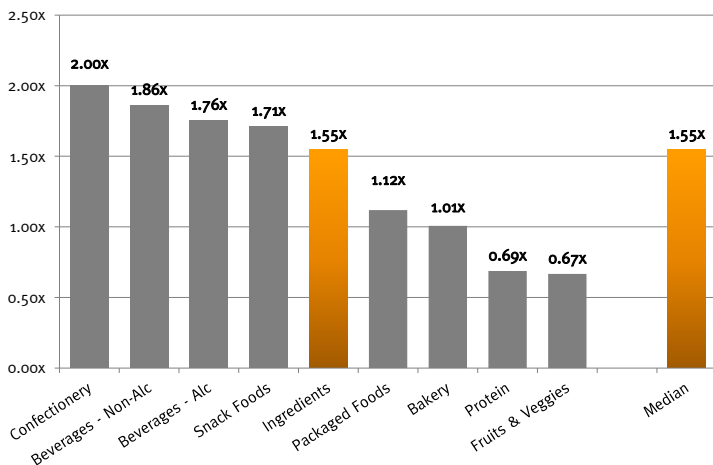
YTD 2011 M&A U.S. Activity by Subsector



Source: Capital IQ and Proprietary Database (2004 to YTD 2011)

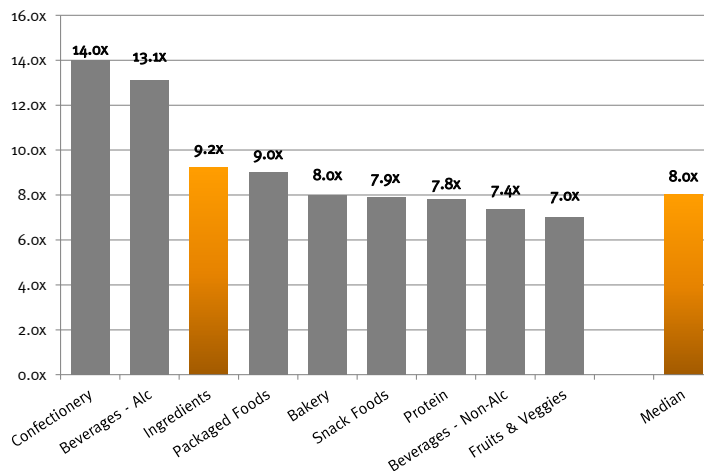
## M&A INGREDIENT VALUATION MULTIPLES RELATIVE TO OTHER FOOD SECTORS

Historical M&A  
EV / Revenue Multiples by Subsector



Source: Capital IQ and Proprietary Database (2004 to 2011)

Historical M&A  
EV / EBITDA Multiples by Subsector



Source: Capital IQ and Proprietary Database (2004 to 2011)

## RECENT MERGERS AND ACQUISITIONS

Announced Date	Target	Total Transaction Value (\$mm)	Buyers	Sellers	Target Business Description
10/28/2011	O.K. Industries Inc.	-	Industrias Bachoco S.A.B. de C.V. (NYSE:IBA)	-	O.K. Industries Inc., through its subsidiary, manufactures livestock and poultry feeds.
10/07/2011	Sethness Greenleaf Inc.	-	Synergy Flavors, Inc.	-	Sethness Greenleaf Inc. creates and manufactures natural, artificial and natural, and synthetic flavors and extracts for food and beverage applications.
10/03/2011	Lehi Roller Mills Co., Inc.	-	Fusion Pharm, Inc. (OTCPK:FSPM)	-	Lehi Roller Mills Co., Inc. produces baking flour for corporate and bakery clients.

Source: Capital IQ and Company Documents

**EUREKA CAPITAL MARKETS, LLC**  
www.eurekacap.com

**California**  
23 Corporate Plaza, Suite 125  
Newport Beach, CA 92660  
Ph: 949.719.2260  
Fx: 949.719.2314

**New York**  
286 Madison Ave., Suite 1300  
New York, NY 10017  
Ph: 646.277.8420  
Fx: 646.277.8421

This report is for information purposes only and is not intended as an offer or solicitation with respect to any purchase or sale of any security. Eureka Capital Markets, LLC gathers its data from sources it considers reliable; however, it does not guarantee the accuracy or completeness of the information provided within this publication. The opinions presented herein reflect the current judgment of the authors and are subject to change. Eureka Capital Markets, LLC makes no warranties, expressed or implied, regarding the accuracy of this information or the subjective opinions expressed by the authors. Eureka Capital Markets, LLC, its officers, directors and partners may at any time have positions in the securities of the companies discussed herein.