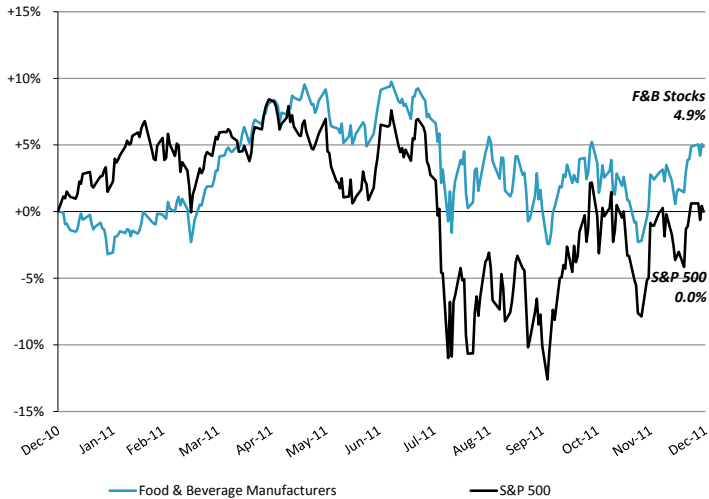


FOOD & BEVERAGE – 2011 4th QUARTER REPORT

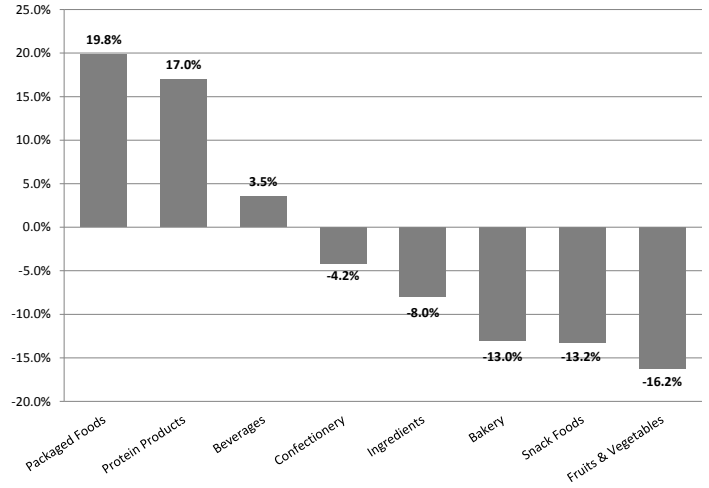
PUBLIC STOCK PERFORMANCE – TWELVE MONTHS ENDING DECEMBER 31, 2011

Food & Beverage
Stocks vs. S&P 500 Index



Note: Food & Beverage Index is a custom, market-weighted index created from the public companies listed on Pages 2 & 3 of this report.

Food & Beverage
Relative Subsector Stock Performance

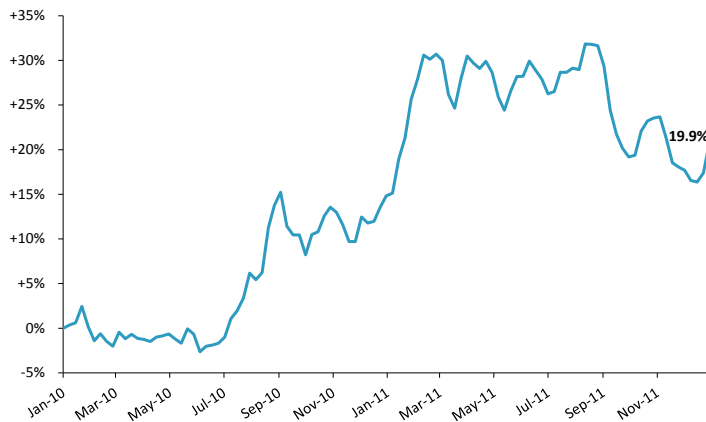


COMMODITY PRICES AND TRENDS

	12/31/2011	52-week			12/31/2011 Close Price % Δ from:		
	Close Price	High	Low	Median	High	Low	Median
Butter, AA Chicago, per lb.	\$1.60	\$2.24	\$1.32	\$1.87	-28.6%	20.8%	-14.8%
Cheddar Cheese - Blocks	1.56	2.16	1.27	1.62	-27.5%	23.3%	-3.7%
Corn, #2 Yellow, USDA 1 bu.	6.46	7.77	3.12	5.79	-16.9%	107.1%	11.6%
Milk Grade A	1.45	1.83	1.10	1.37	-20.8%	31.8%	5.8%
Cocoa, Ivory Coast, per metric ton	2359.00	4257.00	2332.00	3421.00	-44.6%	1.2%	-31.0%
Eggs, Large White Chicago, dozen	1.49	1.49	0.57	1.00	0.0%	162.8%	49.2%
Flour, Hard Winter Kansas, cwt	18.45	24.40	12.90	17.70	-24.4%	43.0%	4.2%
Sugar - Raw Cane, USDA, per lb.	0.36	0.42	0.29	0.37	-14.2%	26.5%	-2.8%
Cattle, per lb.	1.44	1.45	0.94	1.22	-0.8%	52.8%	17.8%
Chicken - Dressed A, per lb.	0.90	0.90	0.83	0.87	-0.2%	8.8%	3.8%
Pork - Hogs, Iowa South, per lb.	0.79	1.05	0.58	0.79	-24.8%	36.5%	-1.0%

Source: Wall Street Journal

Relative, 12-month Mean Price Change (%) of Aggregated Commodities Listed Above



Source: Wall Street Journal

Relative, 24-month Mean Price Change (%) of Aggregated Commodities Listed Above



Source: Wall Street Journal

TRAILING TWELVE-MONTH VALUATION MULTIPLES FOR PUBLIC FOOD & BEVERAGE COMPANIES

Market Data (Given in \$Millions)

Company (\$ mm)	Ticker	Price 12/31/11	Price Performance LTM	Equity Value	Firm Value	1 Yr Est. Growth Rate	EV / LTM		EBITDA Margin
							Sales	EBITDA	
Bakery									
Aryzta AG	YZA	\$48.70	3.8%	\$4,081	\$5,536	NA	1.0x	7.9x	12.5%
Canada Bread Co.	CBY	42.73	-7.1%	1,086	1,055	-1.2%	0.7x	7.0x	9.9%
CSM nv	CSM	15.69	-55.3%	1,060	1,965	NA	0.5x	5.3x	9.3%
Flowers Foods	FLO	18.98	5.8%	2,581	2,912	7.8%	1.1x	9.9x	10.9%
George Weston	WN	66.98	-20.9%	8,645	15,967	-0.7%	0.5x	7.1x	7.2%
Grupo Bimbo SA	BIMBO A	2.04	-4.4%	9,604	11,684	-1.4%	1.3x	11.3x	11.7%
Average			-13.0%			1.1%	0.8x	8.1x	10.2%
Median			-5.7%			-1.0%	0.8x	7.5x	10.4%
Beverages									
Boston Beer	SAM	\$108.56	14.2%	\$1,383	\$1,335	7.8%	2.7x	14.1x	19.4%
Brown Forman	BF.B	80.51	15.6%	11,355	11,734	40.6%	4.3x	13.4x	31.9%
Coca Cola	KO	69.97	6.4%	158,918	171,899	32.5%	3.7x	14.3x	26.2%
Constellation Brands	STZ	20.67	-6.7%	4,187	7,164	NA	2.6x	11.3x	23.1%
Cott	BCB	6.30	-30.0%	599	1,204	30.0%	0.5x	5.6x	9.3%
Dr. Pepper Snapple Group	DPS	39.48	12.3%	8,464	10,416	4.5%	1.8x	8.5x	21.0%
Foster's Group	FGL	0.02	-28.7%	7	24	NA	0.9x	10.8x	8.7%
Monster Beverage Corporation	MNST	92.14	76.2%	8,023	7,325	30.3%	4.5x	16.3x	27.8%
Heineken	HEIA	46.47	-5.5%	26,658	37,791	NA	1.5x	7.8x	19.7%
Pepsi	PEP	66.35	1.6%	103,732	127,360	14.7%	2.0x	10.0x	19.7%
Molson Coors	TAP	43.54	-13.2%	7,902	8,904	7.3%	2.6x	14.5x	18.0%
SABMiller Plc	SAB	35.28	0.1%	56,111	63,905	NA	4.0x	13.2x	30.4%
Average			3.5%			21.0%	2.6x	11.7x	21.3%
Median			0.8%			22.4%	2.6x	12.2x	20.4%
Confectionery									
Barry Callebaut AG	BARN	\$990.16	19.4%	\$5,109	\$5,935	NA	1.0x	10.9x	9.6%
Chocoladefabriken Lindt	LISN	33,582.97	4.2%	7,355	6,720	NA	2.2x	13.2x	16.9%
Halloren Schokoladenfabrik	H2R	7.33	-19.0%	34	79	NA	1.0x	10.2x	9.5%
Hershey Foods	HSY	61.78	31.0%	13,908	15,282	7.1%	2.5x	11.9x	21.3%
Natra SA	CATS:NAT	1.17	-57.9%	55	434	NA	0.9x	NM	1.2%
Petra Foods	P34	1.43	8.9%	873	1,411	NA	0.8x	11.0x	7.4%
Tootsie Roll Industries	TR	23.67	-15.8%	1,365	1,337	NA	2.6x	17.9x	14.3%
Average			-4.2%			7.1%	1.6x	12.5x	11.5%
Median			4.2%			7.1%	1.0x	11.5x	9.6%
Fruits & Vegetables									
Calavo Growers	CVGW	\$25.68	11.4%	\$379	\$426	57.1%	0.9x	18.1x	4.9%
Chiquita Brands	CQB	8.34	-40.5%	382	873	-1.3%	0.3x	6.4x	4.3%
Dole Food Company	DOLE	8.65	-36.0%	766	2,215	5.3%	0.3x	6.8x	4.5%
Fresh Del Monte	FDP	25.01	0.2%	1,444	1,558	2.6%	0.4x	6.9x	6.2%
Average			-16.2%			15.9%	0.5x	9.5x	5.0%
Median			-17.9%			4.0%	0.4x	6.8x	4.7%
Ingredients									
Archer Daniels	ADM	\$28.60	-4.9%	\$19,104	\$26,801	12.3%	0.3x	7.2x	4.3%
Bunge	BG	57.20	-12.7%	8,325	13,249	22.5%	0.2x	7.4x	3.3%
Corn Products	CPO	52.59	14.3%	3,986	5,607	44.4%	0.9x	6.8x	13.5%
Frutarom Industries Ltd.	FRUT	8.89	-15.4%	509	533	NA	1.1x	6.8x	16.6%
Givaudan AG	SWX:GIVN	957.53	-11.3%	8,708	10,284	NA	2.1x	11.0x	19.5%
International Flavors & Fragrances	IFF	52.42	-5.7%	4,241	5,048	6.6%	1.8x	9.3x	19.6%
Kerry Group	KRZ	36.75	9.7%	6,450	7,886	NA	1.0x	8.7x	12.0%
MGP Ingredients	MGPI	5.04	-54.3%	91	112	NA	0.4x	NM	1.6%
Sensient Technologies	SXT	37.90	3.2%	1,898	2,207	9.5%	1.5x	9.4x	16.4%
Symrise AG	XTRA:SY1	26.79	-2.7%	3,166	3,838	NA	1.8x	9.2x	19.8%
Average			-8.0%			19.1%	1.1x	8.4x	12.7%
Median			-5.3%			12.3%	1.1x	8.7x	14.9%
Packaged Foods									
B&G Foods	BGS	\$24.07	75.3%	\$1,148	\$1,528	6.3%	2.9x	12.0x	23.8%
Campbell's Soup	CPB	33.24	-4.3%	10,594	13,412	0.2%	1.7x	8.8x	19.8%
ConAgra Foods	CAG	26.40	16.9%	10,892	13,256	7.2%	1.0x	8.0x	13.0%
Dean Foods	DF	11.20	26.7%	2,057	5,915	7.8%	0.5x	8.5x	5.4%
General Mills	GIS	40.41	13.5%	26,050	34,778	12.3%	2.2x	11.4x	19.3%
Green Mountain Coffee Roasters	GMCR	44.85	36.5%	6,935	7,536	60.0%	2.8x	15.3x	18.6%
Hain Celestial Group	HAIN	36.66	35.5%	1,615	1,817	29.8%	1.6x	13.4x	11.7%
HJ Heinz	HNZ	54.04	9.3%	17,305	21,623	9.0%	1.9x	11.1x	17.3%
Hormel Foods	HRL	29.29	14.3%	7,734	7,448	4.8%	0.9x	8.9x	10.6%
JM Smucker	SJM	78.17	19.1%	8,862	10,437	16.8%	2.0x	9.4x	21.3%
Kellogg	K	50.57	-1.0%	18,162	23,619	6.3%	1.8x	9.8x	18.5%
Kraft Foods	KFT	37.36	18.6%	66,006	93,620	10.1%	1.8x	10.9x	16.1%
Lancaster Colony	LANC	69.34	21.2%	1,890	1,762	4.1%	1.6x	10.8x	14.9%
McCormick & Co.	MKC	50.42	8.4%	6,690	7,660	10.6%	2.1x	12.1x	17.7%
Ralcorp Holdings	RAH	85.50	31.5%	4,718	7,032	10.2%	1.5x	9.0x	16.4%
Sara Lee	SLE	18.92	8.1%	11,177	12,338	NA	1.4x	10.7x	13.0%
Seneca Foods	SENE.A	25.82	-4.3%	304	633	8.1%	0.5x	NM	2.9%
Smart Balance, Inc.	SMBL	5.36	23.8%	316	420	11.1%	1.7x	13.2x	12.6%
Treehouse Foods	THS	65.38	28.0%	2,348	3,337	14.6%	1.6x	11.7x	14.1%
Average			19.8%			12.7%	1.7x	10.8x	15.1%
Median			18.6%			9.6%	1.7x	10.8x	16.1%

TRAILING TWELVE-MONTH VALUATION MULTIPLES FOR PUBLIC FOOD & BEVERAGE COMPANIES - Continued

Market Data (Given in \$Millions)

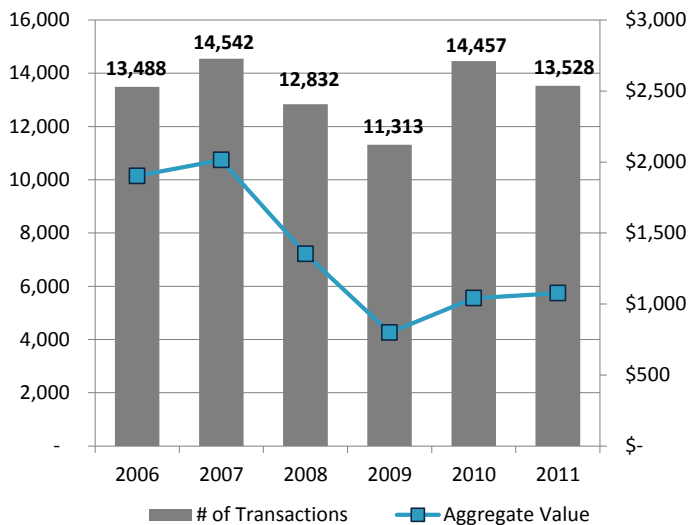
Company (\$ mm)	Ticker	Price 12/31/11	Price Performance		Equity Value	Firm Value	1 Yr Est. Growth Rate	EV / LTM		EBITDA Margin
			LTM					Sales	EBITDA	
Protein Products										
Sanderson Farms	SAFM	\$50.13	28.0%		1,115	1,389	11.3%	0.7x	NM	-6.9%
Seaboard Corp	SEB	2,036.00	2.3%		2,468	2,356	NA	0.4x	5.0x	8.5%
Smithfield Foods	SFD	24.28	17.7%		3,908	5,937	8.0%	0.5x	5.1x	9.2%
Tyson Foods	TSN	20.64	19.9%		7,625	9,119	6.4%	0.3x	5.1x	5.6%
Average			17.0%				8.5%	0.5x	5.0x	4.1%
Median			18.8%				8.0%	0.4x	5.1x	7.0%
Snack Foods										
Diamond Foods	DMND	\$32.27	-39.3%		\$712	\$1,240	89.2%	1.3x	8.9x	14.4%
Golden Enterprises Inc.	GLDC	3.62	6.5%		42	48	NA	0.4x	6.2x	5.7%
John B Sanfilippo & Son Inc.	JBSS	7.54	-39.4%		80	172	NA	0.3x	4.6x	5.4%
J&J Snack Foods	JJSF	53.28	10.4%		999	887	7.5%	1.2x	8.3x	14.4%
Snyder Lance	LNCE	22.50	-4.0%		1,525	1,797	66.0%	1.2x	14.1x	8.4%
The Venture Group	SNAC	3.74	-13.4%		68	99	15.8%	0.7x	9.9x	6.6%
Average			-13.2%				44.6%	0.8x	8.7x	9.2%
Median			-8.7%				40.9%	0.9x	8.6x	7.5%

Source: Capital IQ and Company Documents
Except per share data, presented in \$ millions

EBITDA = Earnings before interest, taxes, depreciation and amortization
Enterprise Value (EV) = Market value of equity + Interest-bearing debt - cash
NA = Not Available

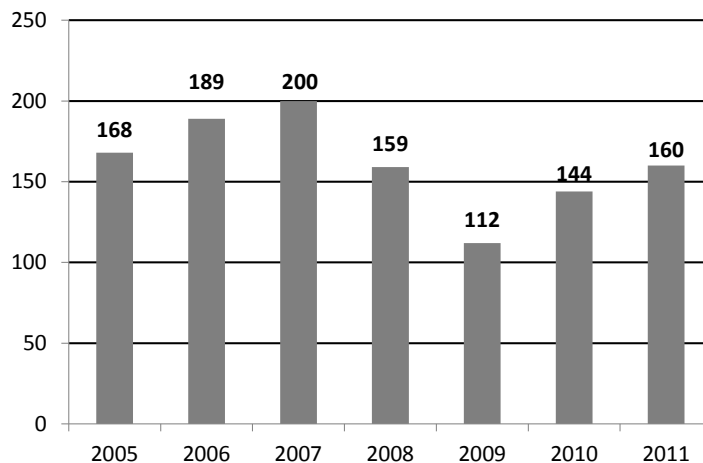
MERGER & ACQUISITION OVERVIEW

U.S. & U.S. Cross Border M&A Activity
All Industries - \$ millions



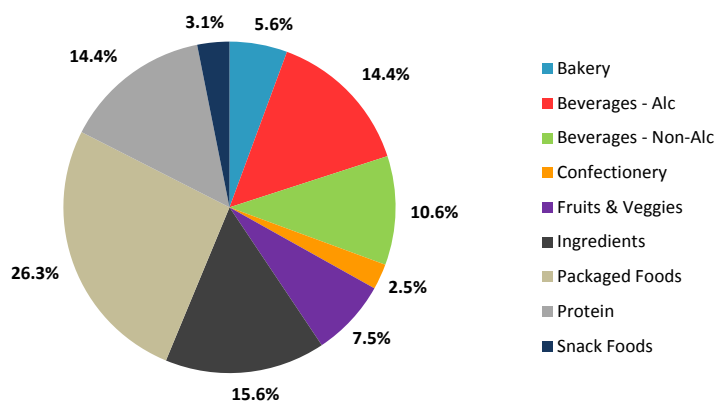
Source: Capital IQ

Food & Beverage M&A Activity
U.S. Targets



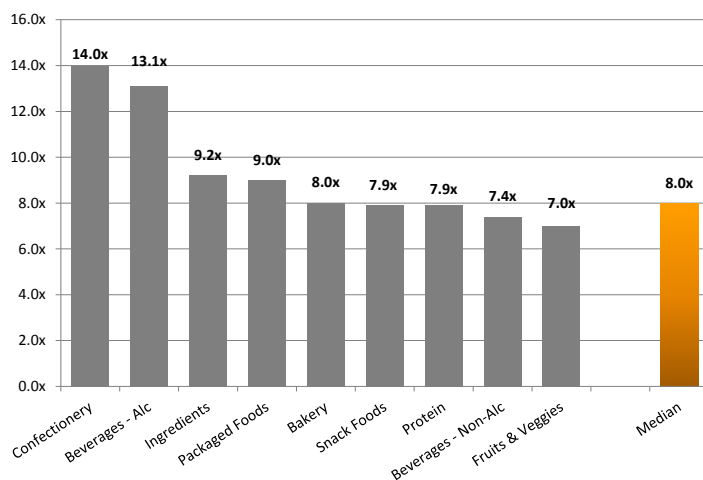
Source: Capital IQ & Eureka research

2011 Food & Beverage Transactions by Subsector
U.S. Targets



Source: Capital IQ and Eureka research

Median* Food & Beverage EBITDA Multiples by Subsector
U.S. Targets



Source: Capital IQ & Eureka research.
* - Represents median from 2004 - FY2011

SELECT SECOND QUARTER 2011 FOOD & BEVERAGE MERGERS AND ACQUISITIONS

Closed Dated	Announced Date	Target/Issuer	Total Transaction Value (\$mm)	Buyers	Sellers	Subsector	Target Business Description
12/31/2011	12/31/2011	Eddy Packing Company, Inc.	-	Mason Wells; Hancock Capital Management, LLC; Akoya Capital, LLC	-	Protein	Eddy Packing Company, Inc., a meat processing plant, produces food products.
12/30/2011	12/5/2011	National Beef Packing Co. LLC	1,482.6	Leucadia National Corp. (NYSE:LUK)	U.S. Premium Beef LLC; Beef Products, Inc.; TMKCo, LLC; TKK	Protein	National Beef Packing Company, LLC engages in processing, packaging, and delivering fresh and frozen beef and beef by-products.
12/29/2011	12/29/2011	Blue Pacific Flavors, Inc.	12.0	Wilmar Europe Trading B.V.	-	Ingredients	Blue Pacific Flavors, Inc. engages in the manufacture and sale of flavors, fragrances, concentrates, and custom blended products.
12/29/2011	12/29/2011	Gaslamp Popcorn Co.	-	Rudolph Foods Company, Inc.	-	Snack Foods	Gaslamp Popcorn Co. produces and sells popped popcorn products.
12/27/2011	12/27/2011	The Donum Estate Inc. and Robert Stemmler Winery	-	Winside, Inc.	Racke GmbH + Co. KG	Alcoholic Beverages	The Donum Estate Inc. and Robert Stemmler Winery owns and operates vineyards and produces wine.
12/21/2011	12/21/2011	Regal Confections Inc.	-	Desjardins Venture Capital; Desjardins Capital régional et coopératif (CRCD)	-	Confectionary	Regal Confections, Inc. engages in developing, manufacturing, packaging, and marketing chocolate and non-chocolate confectionary products.
12/19/2011	12/19/2011	San Rallo Pasta Company	-	Rosina Food Products, Inc.	Mitsui Foods, Inc.	Packaged Food	San Rallo Pasta Company provides gourmet Italian pastas and specialties to restaurants and food service operators.
11/7/2011	11/7/2011	SUN PAC Foods, Limited	-	Liquibrands Inc.	-	Fruits & Veggies	Sun Pac Foods, Limited offers fruit, cocktails, and juices.
12/16/2011	12/16/2011	Louisiana Sugar Refining LLC	46.4	Cargill, Incorporated; Sugar Growers and Refiners, Inc.	Imperial Sugar Co. (NasdaqGS:IPSU)	Ingredients	Louisiana Sugar Refining, LLC provides sugar refining and producing services.
12/5/2011	12/5/2011	Go Pure Foods Inc., Ancient Grain Bar Concept and	-	Biscuits Leclerc Ltd.	Go Pure Foods Inc.	Packaged Food	Ancient Grain Bar Concept and Manufacturing Equipment of Go Pure Foods Inc. is comprised of the grain and fruit
11/30/2011	11/30/2011	Seeds 2000, Inc.	55.2	Nuseed Americas Inc	Aldine Capital Partners, Inc.	Ingredients	Seeds 2000, Inc. produces and delivers various seeds.
11/30/2011	11/11/2011	National Pretzel Company, Inc.	-	ConAgra Foods, Inc. (NYSE:CAG)	Brookstone Holdings, Inc.	Snack Foods	National Pretzel Company, Inc. manufactures pretzels.
11/29/2011	11/29/2011	Kettleman Bagels & Bakery, Inc.	5.0	Einstein Noah Restaurant Group, Inc. (NasdaqGM:BAGL)	-	Bakery	Kettleman Bagels & Bakery, Inc. produces bagels.
11/29/2011	11/29/2011	The Quaker Oats Company, Kretschmer Wheat Germ Brand and Manufacturing Facility	-	Brynwood Partners	The Quaker Oats Company, Inc.	Ingredients	The Quaker Oats Company, Kretschmer Wheat Germ Brand and Manufacturing Facility manufactures wheat germ.
11/21/2011	10/4/2011	Chef Solutions, Inc.	61.7	Mistral Capital Management, LLC	Questor Management	Packaged Food	Chef Solutions, Inc. engages in manufacturing and
11/10/2011	11/10/2011	Evolution Fresh, Inc.	30.0	Starbucks Corporation (NasdaqGS:SBUX)	Fireman Capital Partners	Non-Alcoholic Beverages	Evolution Fresh, Inc. produces and markets fruit and vegetable products.
11/9/2011	11/9/2011	Michel-Schlumberger Partners, L.P.	-	KSSM, LLC	-	Alcoholic Beverages	Michel-Schlumberger Partners, L.P. operates a winery estate. The company produces and markets red and white
11/8/2011	11/8/2011	Hornsby's Pubdrafts Ltd.	27.5	C&C Group plc (ISE:GCC)	E. & J. Gallo Winery, Inc.	Alcoholic Beverages	Hornsby's Pubdrafts Ltd. produces pub draft hard apple cider.
11/3/2011	11/3/2011	Western Grain Trade Ltd. and Western Grain Cleaning & Processing Ltd	-	Alfred C. Toeffler International G.m.b.H.	-	Ingredients	Western Grain Trade Ltd. and Western Grain Cleaning & Processing Ltd engages in processing and marketing of agricultural crops.
11/2/2011	10/28/2011	O.K. Industries Inc.	-	Industrias Bachoco S.A.B. de C.V. (NYSE:IBA)	-	Ingredients	O.K. Industries Inc., through its subsidiary, manufactures livestock and poultry feeds.
10/11/2011	10/11/2011	HCE Corporation	108.0	Dole Fresh Vegetables, Inc.	-	Fruits & Veggies	HCE Corporation produces blueberries, blackberries, raspberries, and strawberries.
10/7/2011	10/7/2011	Sethness Greenleaf Inc.	-	Synergy Flavors, Inc.	-	Ingredients	Sethness Greenleaf Inc. creates and manufactures natural, artificial and natural, and synthetic flavors and
10/4/2011	10/4/2011	Eating with the Seasons, LLC	-	Full Circle Farm, Inc.	-	Fruits & Veggies	Eating with the Seasons, LLC engages in the production of organic fruits and vegetables.
10/3/2011	8/9/2011	Sara Lee's Private Brand Refrigerated Dough Business	545.0	Ralcorp Holdings (NYSE:RAH)	Sara Lee Corp. (NYSE:SLE)	Bakery	A leading manufacturer and distributor of a full range of private brand refrigerated dough products in the U.S.
10/3/2011	10/3/2011	Innovative Foods Corporation	-	Richardson International Limited	-	Fruits & Veggies	Innovative Foods Corporation operates as a soybean grower.
10/3/2011	9/13/2011	Flavor Systems International, Inc.	45.3	Frutarom Industries Ltd. (TASE:FRUT)	-	Ingredients	Flavor Systems International, Inc. engages in the custom-creation of food and beverage flavorings.
10/2/2011	10/2/2011	Coast Seafoods Company	-	Pacific Sea Food Company, Inc.	-	Protein	Coast Seafoods Company offers pacific, kumamoto, triploid, and live in-shell oysters; and manila clams, and mediterranean and trochus mussels.

Source: Capital IQ and Eureka research

EUREKA CAPITAL MARKETS, LLC
www.eurekacap.com

California
23 Corporate Plaza, Suite 125
Newport Beach, CA 92660
Ph: 949.719.2260
Fx: 949.719.2314

New York
286 Madison Ave., Suite 1300
New York, NY 10017
Ph: 646.277.8420
Fx: 646.277.8421

This report is for information purposes only and is not intended as an offer or solicitation with respect to any purchase or sale of any security. Eureka Capital Markets, LLC gathers its data from sources it considers reliable; however, it does not guarantee the accuracy or completeness of the information provided within this publication. The opinions presented herein reflect the current judgment of the authors and are subject to change. Eureka Capital Markets, LLC makes no warranties, expressed or implied, regarding the accuracy of this information or the subjective opinions expressed by the authors. Eureka Capital Markets, LLC, its officers, directors and partners may at any time have positions in the securities of the companies discussed herein.

© 2012 Eureka Capital Markets, LLC. All rights reserved.

January 2012