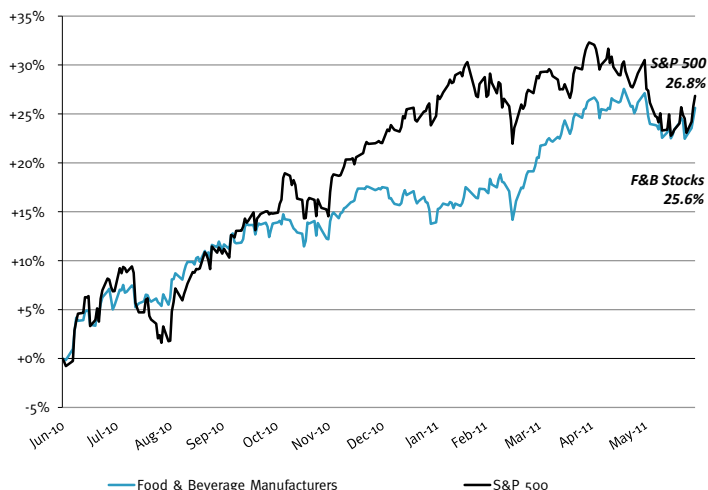


FOOD & BEVERAGE – 2011 2nd QUARTER REPORT

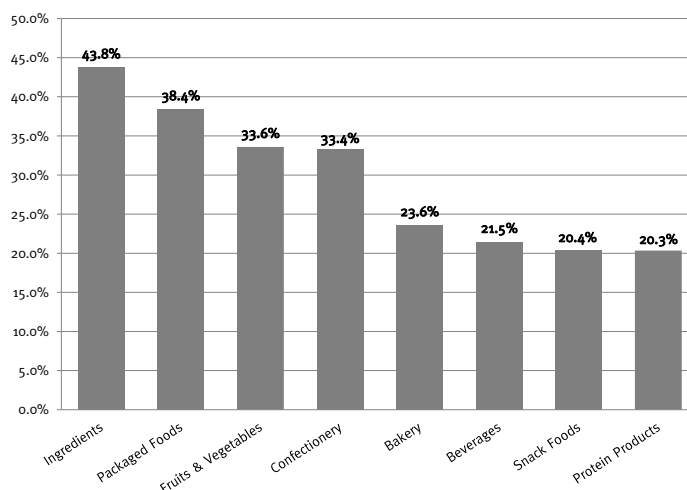
PUBLIC STOCK PERFORMANCE – TWELVE MONTHS ENDING JUNE 30, 2011

Food & Beverage
Stocks vs. S&P 500 Index



Note: Food & Beverage Index is a custom, market-weighted index created from the public companies listed on Pages 2 & 3 of this report.

Food & Beverage
Relative Subsector Stock Performance

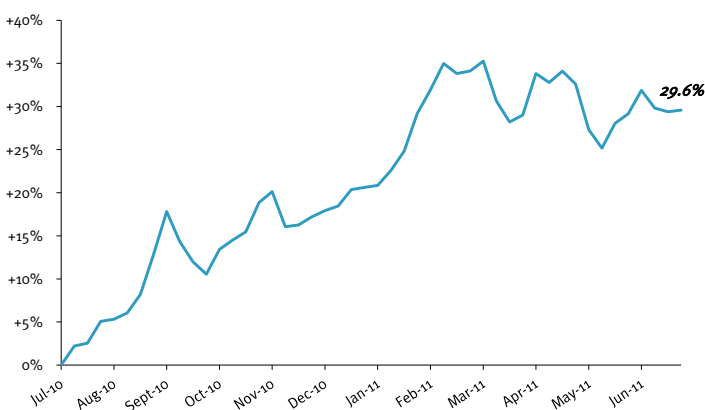


COMMODITY PRICES AND TRENDS

	6/30/2011 Close Price	52-week			6/30/2011 Close Price % Δ from:		
		High	Low	Median	High	Low	Median
Butter, AA Chicago, lb.	\$2.02	\$2.24	\$1.61	\$2.04	-9.6%	25.5%	-0.7%
Cheddar Cheese - Blocks	213.00	213.00	132.25	164.38	0.0%	61.1%	29.6%
Corn - No. 2 Yellow	6.62	7.81	3.42	5.90	-15.3%	93.4%	12.2%
Milk, Nonfat Dry, Chicago	161.00	180.00	123.00	128.50	-10.6%	30.9%	25.3%
Cocoa, Ivory Coast, \$ per metric ton	3364.00	4257.00	3197.00	3430.50	-21.0%	5.2%	-1.9%
Eggs, Large White Chicago, dozen	0.93	1.31	0.57	0.92	-29.1%	63.7%	0.5%
Flour, Hard Winter Kansas, cwt	19.35	23.95	13.80	19.55	-19.2%	40.2%	-1.0%
Sugar, Cane Raw, World, lb. fob	31.05	38.57	22.56	32.72	-19.5%	37.6%	-5.1%
Beef - Select	159.08	175.17	131.26	146.75	-9.2%	21.2%	8.4%
Chicken - Dressed A	0.87	0.88	0.85	0.86	-1.2%	2.5%	0.7%
Pork - Hogs, Iowa South	97.33	97.33	62.54	79.83	0.0%	55.6%	21.9%

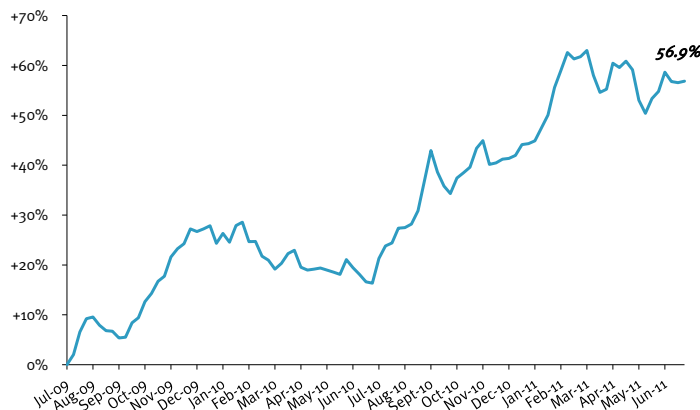
Source: Wall Street Journal

Relative, 12-month Mean Price Change (%) of Aggregated Commodities Listed Above



Source: Wall Street Journal

Relative, 24-month Mean Price Change (%) of Aggregated Commodities Listed Above



Source: Wall Street Journal

TRAILING TWELVE-MONTH VALUATION MULTIPLES FOR PUBLIC FOOD & BEVERAGE COMPANIES

Market Data (Given in \$Millions)

Company (\$ mm)	Ticker	Price 06/30/11	Price Performance LTM	Equity Value	Firm Value	1 Yr Est. Growth Rate	EV / LTM		EBITDA Margin
							Sales	EBITDA	
Bakery									
Aryzta AG	YZA	\$53.05	38.7%	\$4,393	\$6,168	NA	1.3x	10.9x	11.7%
Canada Bread Co.	CBY	45.62	0.8%	1,160	1,110	6.2%	0.7x	6.9x	9.9%
CSM nv	CSM	33.70	12.3%	2,276	3,192	NA	0.8x	8.6x	9.3%
Flowers Foods	FLO	22.04	35.3%	2,984	3,097	7.0%	1.2x	10.4x	11.5%
George Weston	WN	72.51	5.7%	9,361	17,515	5.8%	0.5x	7.8x	6.9%
Grupo Bimbo SA	BIMBO A	2.31	29.3%	10,887	13,469	30.6%	1.4x	10.6x	12.8%
Average			20.3%			12.4%	1.0x	9.2x	10.4%
Median			20.8%			6.6%	1.0x	9.5x	10.7%
Beverages									
Boston Beer	SAM	\$89.60	32.8%	\$1,200	\$1,155	8.3%	2.4x	12.1x	20.2%
Brown Forman	BF.B	74.69	30.5%	10,670	10,862	31.6%	4.3x	13.2x	32.4%
Coca Cola	KO	67.29	34.3%	154,044	168,309	31.2%	4.4x	15.5x	28.5%
Constellation Brands	STZ	20.82	33.3%	4,465	7,444	NA	2.2x	11.3x	19.8%
Cott	BCB	8.39	44.0%	796	1,417	26.0%	0.7x	7.3x	9.9%
Dr. Pepper Snapple Group	DPS	41.93	12.1%	9,282	11,200	4.9%	2.0x	9.0x	21.8%
Foster's Group	FGL	5.53	15.5%	10,724	12,813	NA	2.9x	10.2x	28.5%
Hansen Natural	HANS	80.95	107.0%	7,155	6,563	23.1%	4.6x	16.5x	28.0%
Heineken	HEIA	60.21	40.6%	34,540	47,221	NA	2.2x	11.1x	19.6%
Pepsi	PEP	70.43	15.6%	111,325	136,072	14.3%	2.3x	11.0x	20.5%
Molson Coors	TAP	44.74	5.6%	8,372	9,339	7.6%	2.8x	14.7x	19.4%
SABMiller Plc	SAB	36.48	29.0%	57,640	65,816	NA	4.3x	16.1x	27.0%
Average			33.4%			18.4%	2.9x	12.3x	23.0%
Median			31.7%			18.7%	2.6x	11.7x	21.2%
Confectionery									
Barry Callebaut AG	BARN	\$989.78	58.8%	\$5,112	\$6,249	NA	1.1x	12.7x	8.7%
Chocoladefabriken Lindt	LISN	36,412.79	48.0%	7,859	7,218	NA	2.6x	16.0x	16.3%
Halloren Schokoladenfabrik	H2R	9.73	13.5%	45	95	NA	1.2x	12.3x	9.5%
Hershey Foods	HSY	56.85	18.6%	12,820	13,936	5.6%	2.4x	11.4x	21.0%
Natra SA	CATS:NAT	2.03	-15.8%	96	544	NA	1.2x	NM	1.8%
Petra Foods	P34	1.61	84.5%	985	1,536	NA	0.9x	13.3x	7.0%
Tootsie Roll Industries	TR	29.26	27.4%	1,667	1,580	NA	3.0x	19.2x	15.7%
Average			33.6%			5.6%	1.8x	14.1x	11.4%
Median			27.4%			5.6%	1.2x	13.0x	9.5%
Fruits & Vegetables									
Calavo Growers	CVGW	\$21.06	17.3%	\$310	\$341	19.6%	0.8x	12.1x	6.5%
Chiquita Brands	CQB	13.02	7.2%	591	1,109	-0.1%	0.3x	6.2x	5.5%
Dole Food Company	DOLE	13.52	29.6%	1,198	2,693	3.8%	0.4x	8.2x	4.7%
Fresh Del Monte	FDP	26.67	31.8%	1,578	1,793	2.8%	0.5x	8.5x	5.9%
Average			21.5%			6.5%	0.5x	8.8x	5.7%
Median			23.4%			3.3%	0.4x	8.4x	5.7%
Ingredients									
Archer Daniels	ADM	\$30.15	16.8%	\$19,232	\$31,895	26.1%	0.4x	9.1x	4.8%
Bunge	BG	68.95	40.2%	10,152	15,058	16.2%	0.3x	9.5x	3.3%
Corn Products	CPO	55.28	82.4%	4,218	5,734	40.6%	1.2x	7.6x	15.3%
Frutarom Industries Ltd.	FRUT	10.89	47.8%	590	624	NA	1.4x	7.7x	17.6%
Givaudan AG	SWX:GIVN	1056.92	23.6%	9,612	11,047	NA	2.4x	11.2x	21.8%
International Flavors & Fragrances	IFF	64.24	51.4%	5,164	6,029	7.6%	2.2x	11.4x	19.7%
Kerry Group	KRZ	41.40	48.5%	7,267	8,943	NA	1.3x	10.9x	12.3%
MGP Ingredients	MGPI	8.71	31.4%	155	161	14.2%	0.7x	8.7x	8.0%
Sensient Technologies	SXT	37.07	43.0%	1,856	2,186	9.6%	1.6x	9.8x	16.3%
Symrise AG	XTRA:SY1	31.91	52.5%	3,771	4,533	NA	2.0x	9.5x	21.1%
Average			43.8%			19.1%	1.4x	9.5x	14.0%
Median			45.4%			15.2%	1.4x	9.5x	15.8%
Packaged Foods									
B&G Foods	BGS	\$20.62	91.3%	\$988	\$1,366	6.0%	2.6x	11.1x	23.6%
Campbells Soup	CPB	34.55	-3.6%	11,090	13,755	0.3%	1.8x	8.8x	20.5%
ConAgra Foods	CAG	25.81	10.7%	10,553	12,815	6.2%	1.1x	7.8x	13.5%
Dean Foods	DF	12.27	21.8%	2,248	6,200	4.5%	0.5x	8.6x	5.9%
General Mills	GIS	37.22	4.8%	23,761	30,274	6.5%	2.0x	9.5x	21.2%
Green Mountain Coffee Roasters	GMCR	89.26	247.3%	13,593	14,643	86.7%	7.7x	46.1x	16.6%
Hain Celestial Group	HAIN	33.36	65.4%	1,450	1,661	20.8%	1.6x	13.8x	11.4%
HJ Heinz	HNZ	53.28	23.3%	17,144	21,331	9.5%	2.0x	11.0x	18.2%
Hormel Foods	HRL	29.81	47.3%	7,965	7,606	9.0%	1.0x	9.0x	11.1%
JM Smucker	SJM	76.44	26.9%	8,743	9,727	24.2%	2.1x	8.9x	23.2%
Kellogg	K	55.32	10.0%	20,074	25,655	6.0%	2.0x	10.6x	19.2%
Kraft Foods	KFT	35.23	25.8%	61,930	89,866	7.7%	1.8x	10.8x	16.5%
Lancaster Colony	LANC	60.82	14.0%	1,669	1,561	4.0%	1.4x	9.1x	15.8%
McCormick & Co.	MKC	49.57	30.6%	6,568	7,492	8.3%	2.2x	12.2x	18.3%
Ralcorp Holdings	RAH	86.58	58.0%	4,766	7,168	17.2%	1.6x	9.3x	17.3%
Sara Lee	SLE	18.99	34.7%	11,111	12,006	NA	1.1x	9.5x	11.6%
Seneca Foods	SENE.B	24.65	-25.0%	298	532	4.5%	0.4x	9.6x	4.7%
Smart Balance, Inc.	SMBL	5.18	26.7%	308	353	2.5%	1.5x	14.8x	10.0%
Treehouse Foods	THS	54.61	19.6%	1,939	2,889	14.2%	1.5x	10.2x	14.8%
Average			38.4%			13.2%	1.9x	12.1x	15.4%
Median			25.8%			7.1%	1.6x	9.6x	16.5%

TRAILING TWELVE-MONTH VALUATION MULTIPLES FOR PUBLIC FOOD & BEVERAGE COMPANIES - Continued

Market Data (Given in \$Millions)

Company (\$ mm)	Ticker	Price 06/30/11	Price Performance LTM	Equity Value	Firm Value	1 Yr Est. Growth Rate	EV / LTM		EBITDA Margin
							Sales	EBITDA	
Protein Products									
Cagle's	CGLA	\$4.08	-17.6%	\$19	\$43	NA	0.1x	7.2x	1.9%
Sanderson Farms	SAFM	47.78	-5.8%	1,058	1,212	2.8%	0.6x	12.0x	5.2%
Seaboard Corp	SEB	2418.00	60.1%	2,940	2,799	NA	0.6x	6.0x	9.7%
Smithfield Foods	SFD	21.87	46.8%	3,632	5,385	7.3%	0.4x	4.7x	9.4%
Tyson Foods	TSN	19.42	18.5%	7,370	9,175	12.8%	0.3x	4.2x	7.2%
Average			20.4%			7.6%	0.4x	6.8x	6.7%
Median			18.5%			7.3%	0.4x	6.0x	7.2%
Snack Foods									
Diamond Foods	DMND	\$76.34	85.7%	\$1,681	\$2,252	39.6%	2.5x	16.7x	14.8%
Golden Enterprises Inc.	GLDC	3.48	16.0%	41	46	NA	0.4x	5.7x	6.3%
John B Sanfilippo & Son Inc.	JBSS	8.46	-41.5%	90	225	NA	0.3x	7.4x	4.7%
J&J Snack Foods	JJSF	49.85	18.4%	926	805	6.2%	1.1x	7.6x	15.0%
Snyder Lance ¹	LNCE	21.63	31.2%	1,454	1,730	64.7%	1.5x	10.6x	14.2%
The Inventure Group	SNAK	3.99	31.7%	72	92	13.8%	0.7x	7.6x	8.8%
Average			23.6%			31.1%	1.1x	9.3x	10.6%
Median			24.8%			26.7%	0.9x	7.6x	11.5%

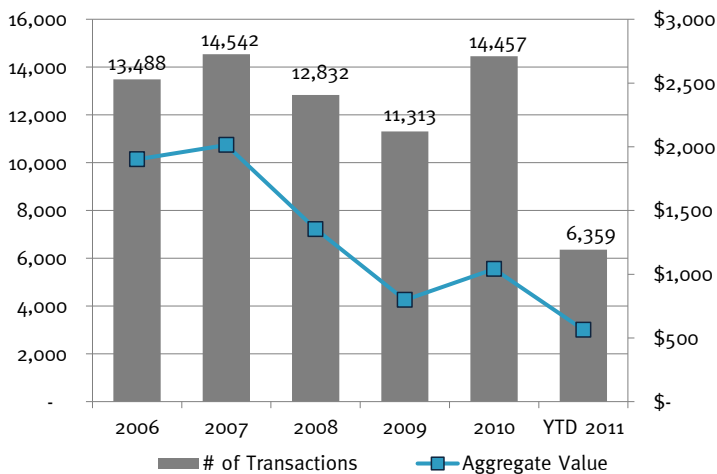
¹ EBITDA is based upon Eureka's estimate of TTM performance post large acquisition

Source: Capital IQ and Company Documents
Except per share data, presented in \$ millions

EBITDA = Earnings before interest, taxes, depreciation and amortization
Enterprise Value (EV) = Market value of equity + Interest-bearing debt - cash
NA = Not Available

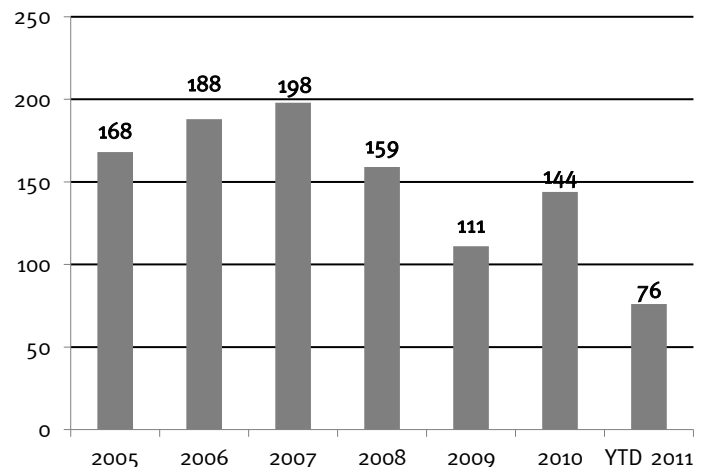
MERGER & ACQUISITION OVERVIEW

U.S. & U.S. Cross Border M&A Activity All Industries - \$ millions



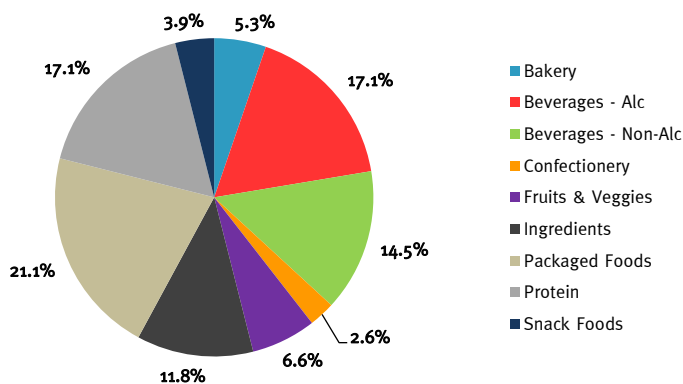
Source: Capital IQ

Food & Beverage M&A Activity U.S. Targets



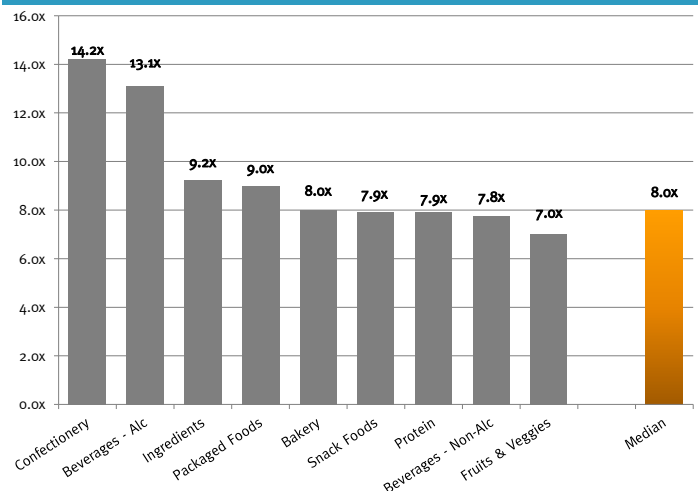
Source: Capital IQ & Eureka research

YTD 2011 Food & Beverage Transactions by Subsector U.S. Targets



Source: Capital IQ and Eureka research

Median* Food & Beverage EBITDA Multiples by Subsector U.S. Targets



Source: Capital IQ & Eureka research.

* - Represents median from 2004 - YTD 2011

SELECT SECOND QUARTER 2011 FOOD & BEVERAGE MERGERS AND ACQUISITIONS

Closed Date	Announced Date	Target/Issuer	Total Transaction Value (\$mm)	Buyers	Sellers	Subsector	Target Business Description
6/20/2011	6/15/2011	Premier Pulses International, Inc.	-	Viterra, Inc. (TSX:VT)	-	Fruits & Veggies	Premier Pulses International, Inc. engages in processing and marketing green and yellow peas, lentils, and chickpeas.
6/6/2011	6/6/2011	WheyUp, LLC	-	Shadow Beverages and Snacks, LLC	-	Non-Alcoholic Beverages	WheyUp, LLC produces non-carbonated and sugar-free pre-workout drink with whey protein, caffeine, and B vitamins.
6/6/2011	6/6/2011	Cattleman's Choice Loomix, LLC	-	ADM Alliance Nutrition, Inc.	-	Ingredients	Cattleman's Choice Loomix, LLC produces liquid cattle feed supplements to ranchers and dairymen.
6/1/2011	6/1/2011	Wenner Bread Products	-	Frontenac Company	-	Bakery	Manufactures nearly 500 different varieties of breads and rolls for retail, in-store and food service bakeries.
6/1/2011	5/25/2011	Renaissance Food Group, LLC	16.0	Calavo Growers Inc. (NasdaqGS:CVGW)	The Really Cool Food Company LLC	Fruits & Veggies	Renaissance Food Group, LLC provides fresh-cut fruits, vegetables, and specialty products.
5/31/2011	5/31/2011	Seghesio Family Vineyards	-	Crimson Wine Group, Ltd.	-	Alcoholic Beverages	Seghesio Family Vineyards produces red and white wines.
5/27/2011	5/5/2011	Aidells Sausage Company, Inc.	87.0	Sara Lee Corp. (NYSE:SLE)	Encore Consumer Capital; Geolo Capital	Protein	Aidells Sausage Company, Inc. produces sausages for retail and foodservice customers.
5/23/2011	1/6/2011	Zappe Endeavors, LLC	-	UTZ Quality Foods, Inc.	-	Snacks Foods	Zappe Endeavors, LLC, doing business as Zapp's Potato Chip Co., produces potato chips.
5/16/2011	5/16/2011	Rowland Coffee Roasters, Inc.	360.0	The J. M. Smucker Company (NYSE:SJM)	-	Non-Alcoholic Beverages	Rowland Coffee Roasters, Inc. roasts and produces espresso coffee products.
5/16/2011	3/7/2011	Bollente Companies, Inc. (OTCPK:ACBR)	-	Bollente, Inc.	-	Ingredients	Bollente Companies Inc. develops flavorings, seasonings, and condiments.
5/13/2011	5/13/2011	Mrs. Cubbison	-	Sugar Foods Corp.	Hostess Brands	Packaged Foods	Mrs. Cubbison's brand products include croutons, dressings and meatloaf mixes.
5/10/2011	1/20/2011	Al Safa Halal Ltd.	-	Engro Foods Limited	-	Packaged Foods	Al Safa Halal Ltd. manufactures and sells chicken, turkey, beef, pizza, and falafel products.
5/6/2011	5/6/2011	Danisco	6,635.2	Elliott Management Corporation	-	Ingredients	Danisco A/S engages in the development, production, and sale of food ingredients, enzymes, and bio-based solutions.
5/6/2011	5/6/2011	Idaho Pacific Holdings, Inc.	86.8	Novacap Investments, Inc.	Otter Tail Corporation (NasdaqGS:OTTR)	Ingredients	Idaho Pacific Holdings, Inc. manufactures dehydrated potato products for the use of ingredients in the food industry.
5/6/2011	5/4/2011	Clearwater Seafoods Income Fund	189.2	Cooke Aquaculture, Inc.	-	Protein	The company's operations include harvesting, processing and marketing and distributing premium shellfish in North America, Europe, and Asia.
5/5/2011	5/5/2011	Okami, Inc.	-	Fuji Food Products, Inc.	-	Packaged Foods	Okami, Inc. manufactures and distributes sushi.
5/4/2011	4/26/2011	Marin French Cheese Co.	-	Laiteries Hubert Triballat SA	-	Packaged Foods	Marin French Cheese Co. produces and sells cheese products.
4/28/2011	4/28/2011	Buena Vista Winery, Inc.	-	Boisset Family Estates	Eight Estates Fine Wines, LLC	Alcoholic Beverages	Buena Vista Winery, Inc. is an operator of a wine making production in the Carneros Region of California's Sonoma Valley.
4/28/2011	4/28/2011	Gary Farrell Wines, Inc.	-	Vincraft Group	Eight Estates Fine Wines, LLC	Alcoholic Beverages	Gary Farrell Wines, Inc. owns and operates vineyards and produces wines.
4/27/2011	4/25/2011	Spence & Co. Ltd.	8.5	Alliance Select Foods International, Inc. (PSE:FOOD)	-	Protein	Spence & Co. Ltd. produces smoked salmons and seafood.
4/26/2011	4/26/2011	NEXT Proteins, Inc.	-	GarMark Advisors L.L.C.; Northwood Ventures, L.L.C.; Stockton Road Capital, LLC	-	Packaged Foods	NEXT Proteins, Inc. engages in developing, manufacturing, and distributing whey protein supplements and foods.
4/24/2011	4/24/2011	Albuquerque Tortilla Company, Inc.	8.8	Gruma S.A.B. de CV (BMV:GRUMA - B)	-	Packaged Foods	Albuquerque Tortilla Company, Inc. produces Mexican foods.
4/19/2011	4/10/2011	Tasty Baking Co. (NasdaqGM:TSTY)	143.8	Flowers Bakeries, LLC	-	Bakery	Tasty Baking Company manufactures, co-packages and sells sweet baked goods.
4/18/2011	4/18/2011	Urban Processing, LLC	-	Mariani Packing Co., Inc.	-	Fruits & Veggies	Urban Processing, LLC produces sweet and moist cranberries for fine restaurants and chefs.
4/15/2011	3/1/2011	Fetzer Vineyards	234.0	Vina Concha y Toro S.A. (SNSE:CONCHATORO)	Brown-Forman Corporation (NYSE:BF.B)	Alcoholic Beverages	Fetzer Vineyards operates vineyards and wineries to produce vintage commercial red table wines.
4/8/2011	4/8/2011	Zeigler Beverage Company	-	LiDestri Foods, Inc.	Clearview Capital, LLC; Brookside Mezzanine Partners	Non-Alcoholic Beverages	Zeigler Beverage Company produces cider and blended juices.
4/7/2011	4/7/2011	Kluge Estate Winery & Vineyards	8.1	Undisclosed	Farm Credit Of The Virginias Aca	Alcoholic Beverages	Kluge Estate Winery & Vineyards provides wines.
4/1/2011	1/6/2011	Dean Foods Co., Customer Brand Yogurt Business	-	Schreiber Foods, Inc.	Dean Foods Co. (NYSE:DF)	Packaged Foods	Dean Foods Co., Customer Brand Yogurt Business consists of yogurt production facilities and assets located in California, Wisconsin, and New York.

Source: Capital IQ and Eureka research

EUREKA CAPITAL MARKETS, LLC
www.eurekacap.com

California
23 Corporate Plaza, Suite 125
Newport Beach, CA 92660
Ph: 949.719.2260
Fx: 949.719.2314

New York
286 Madison Ave., Suite 1300
New York, NY 10017
Ph: 646.277.8420
Fx: 646.277.8421

This report is for information purposes only and is not intended as an offer or solicitation with respect to any purchase or sale of any security. Eureka Capital Markets, LLC gathers its data from sources it considers reliable; however, it does not guarantee the accuracy or completeness of the information provided within this publication. The opinions presented herein reflect the current judgment of the authors and are subject to change. Eureka Capital Markets, LLC makes no warranties, expressed or implied, regarding the accuracy of this information or the subjective opinions expressed by the authors. Eureka Capital Markets, LLC, its officers, directors and partners may at any time have positions in the securities of the companies discussed herein.